

VARIANTE PARZIALE RICOGNITIVA

tav. n. **13 4 h** 23

INDIVIDUAZIONE SCHEDE E GRADI DI PROTEZIONE

ADEGUATA A:
 Variante secondo stralcio dei Centri Storici e delle Corti Rurali adottata con DCC 197/2003 e approvata con DGRV 3241/2007

progettista
 dott. arch. Marco Zandonà


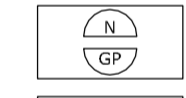



collaboratori
 dott. arch. Maria Elisabetta Gasparrini

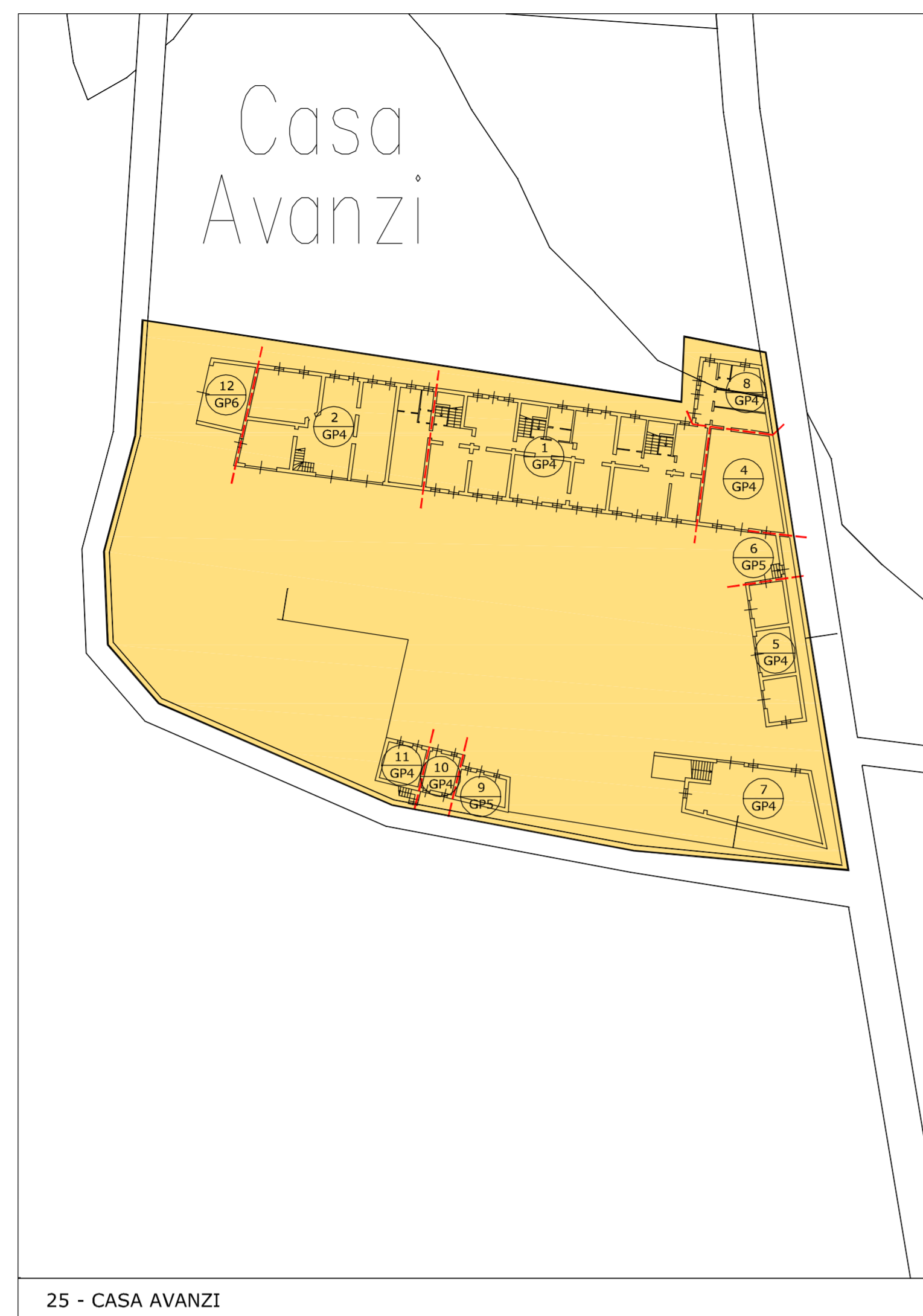
DATA ottobre 2013
 SCALA 1:500

SINDACO
 SEGRETARIO

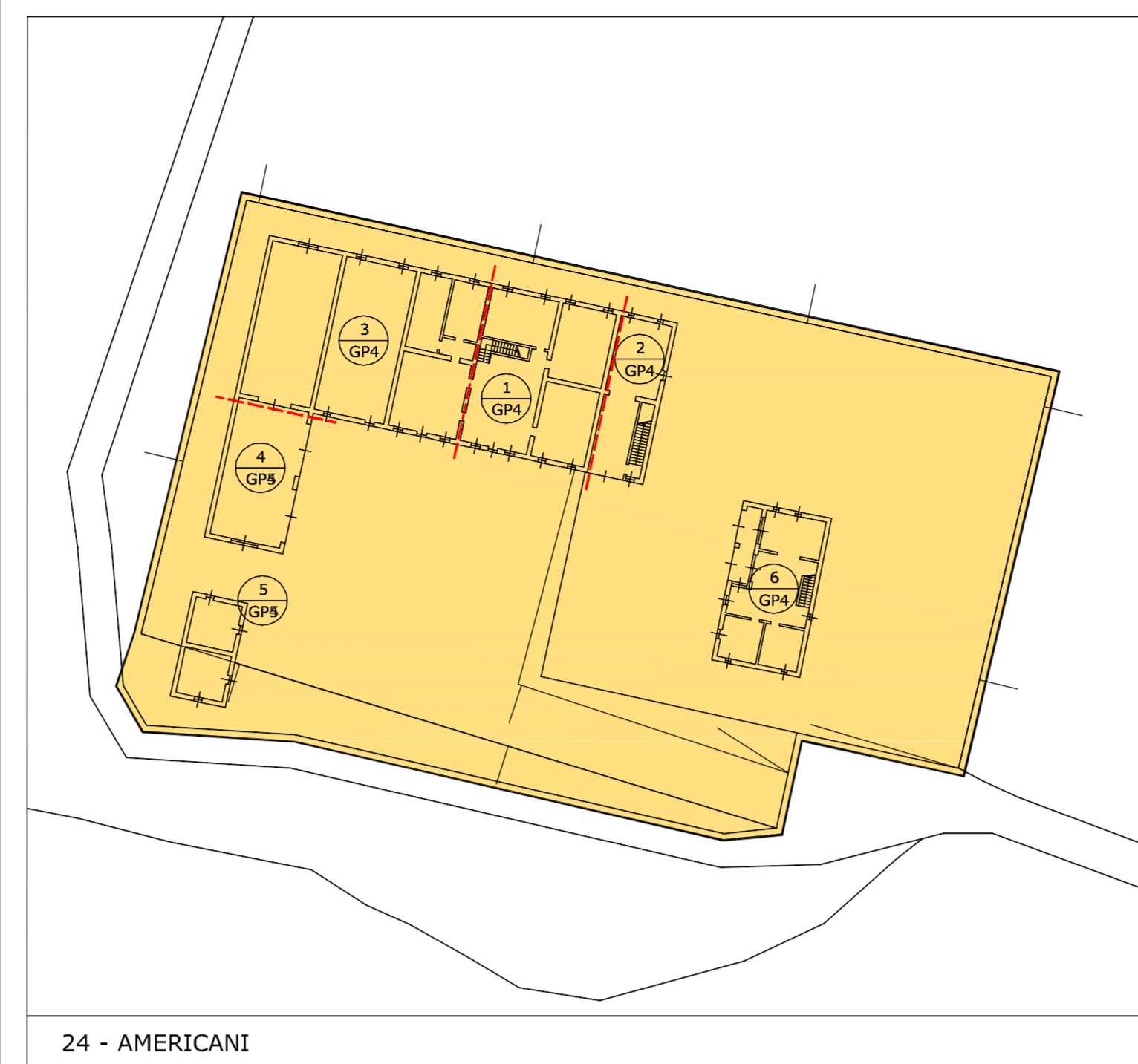
- 24 - AMERICANI
- 25 - CASA AVANZI
- 26 - SANT'ANTONIO
- 28 - FORCELLO
- 29 - CALLE
- 30 - SANTA GIUSTINA
- 31 - SANTA GIUSTINA NORD
- 32 - MIZZAGO
- 33 - MORMONTEA
- 34 - SORCE' DI SOTTO

LEGENDA

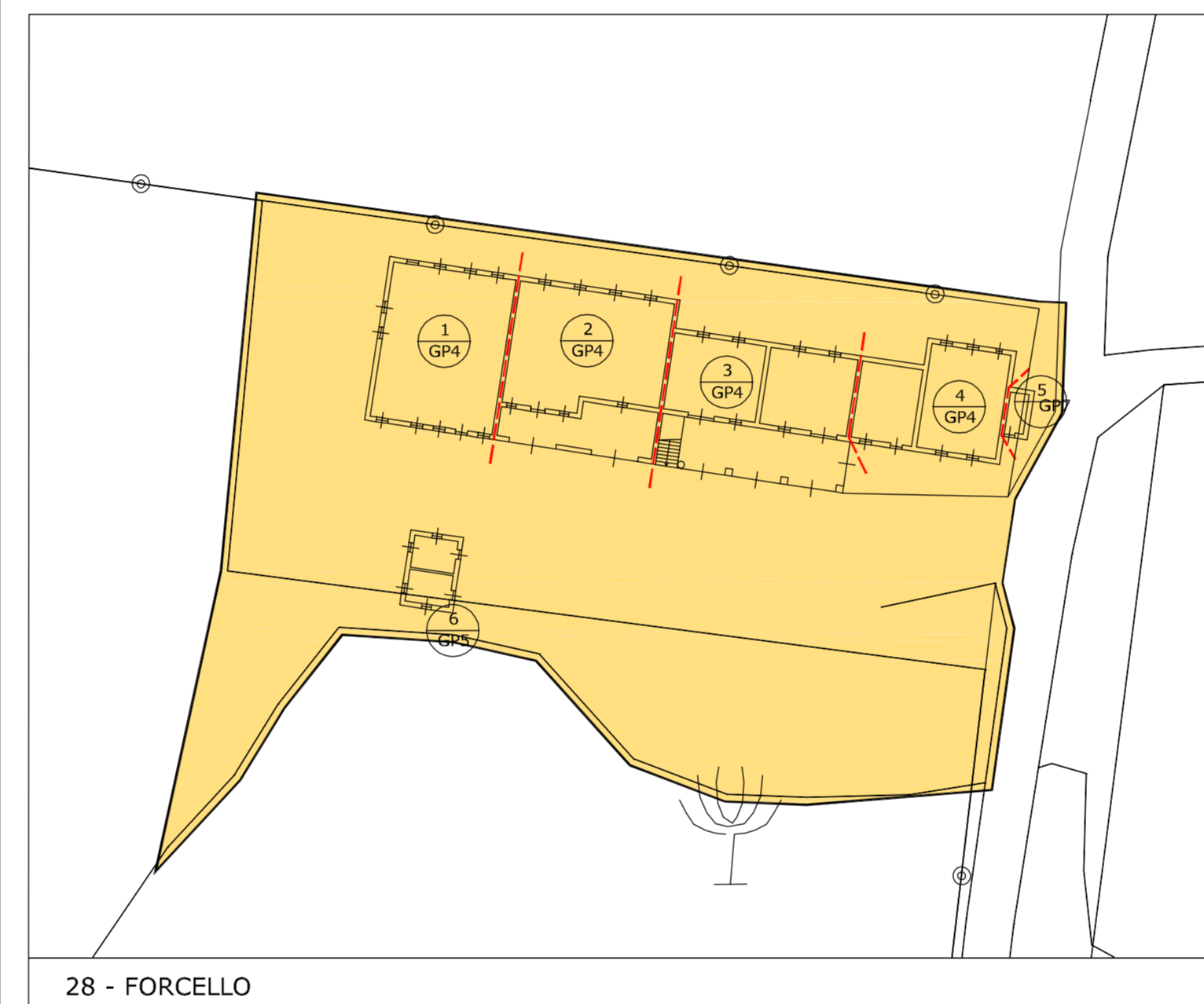
-  identificazione scheda edificio
-  numero riferimento scheda B
-  grado di protezione
-  ambito Corti Rurali (art. 10 L.R. 24/85)
-  confine comunale



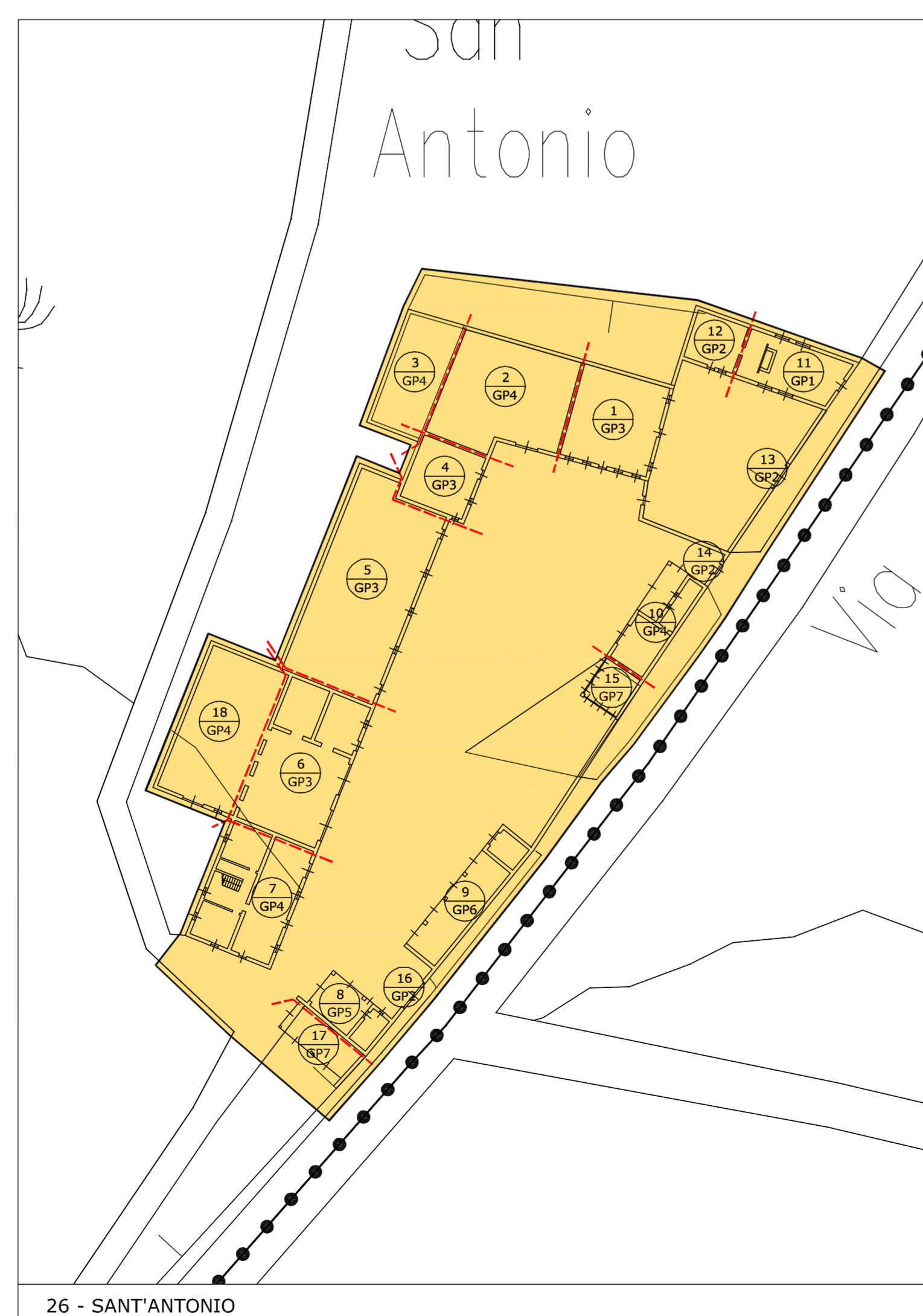
25 - CASA AVANZI



24 - AMERICANI



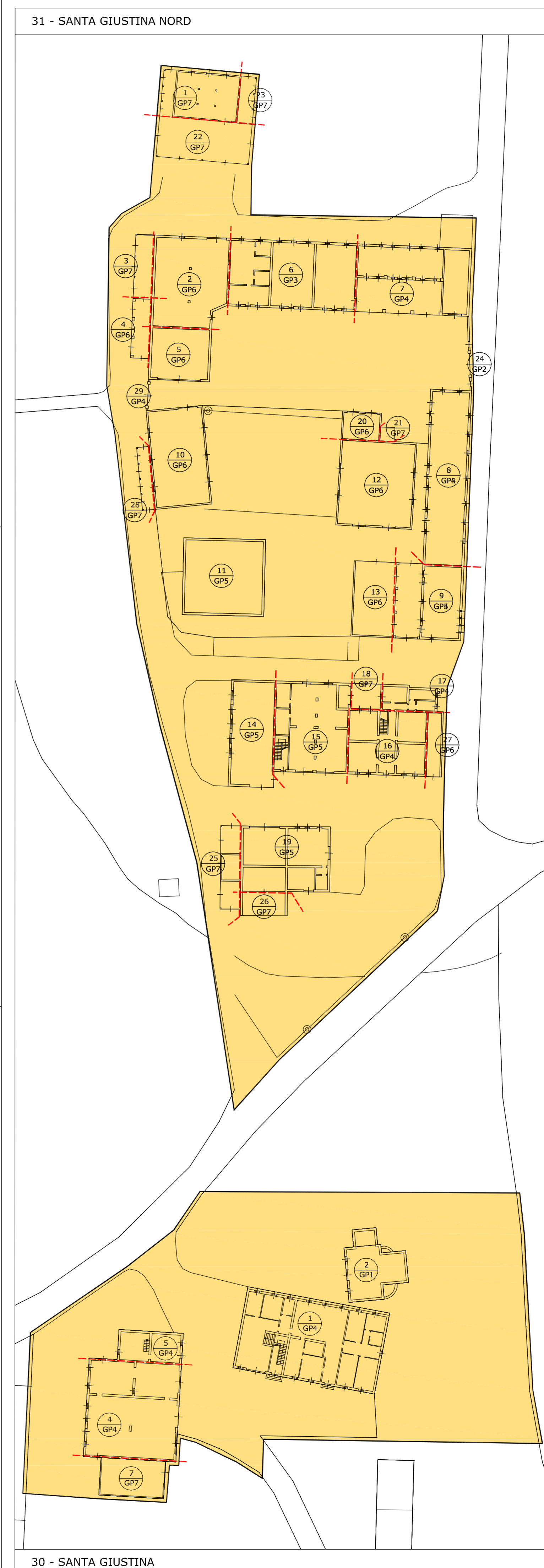
28 - FORCELLO



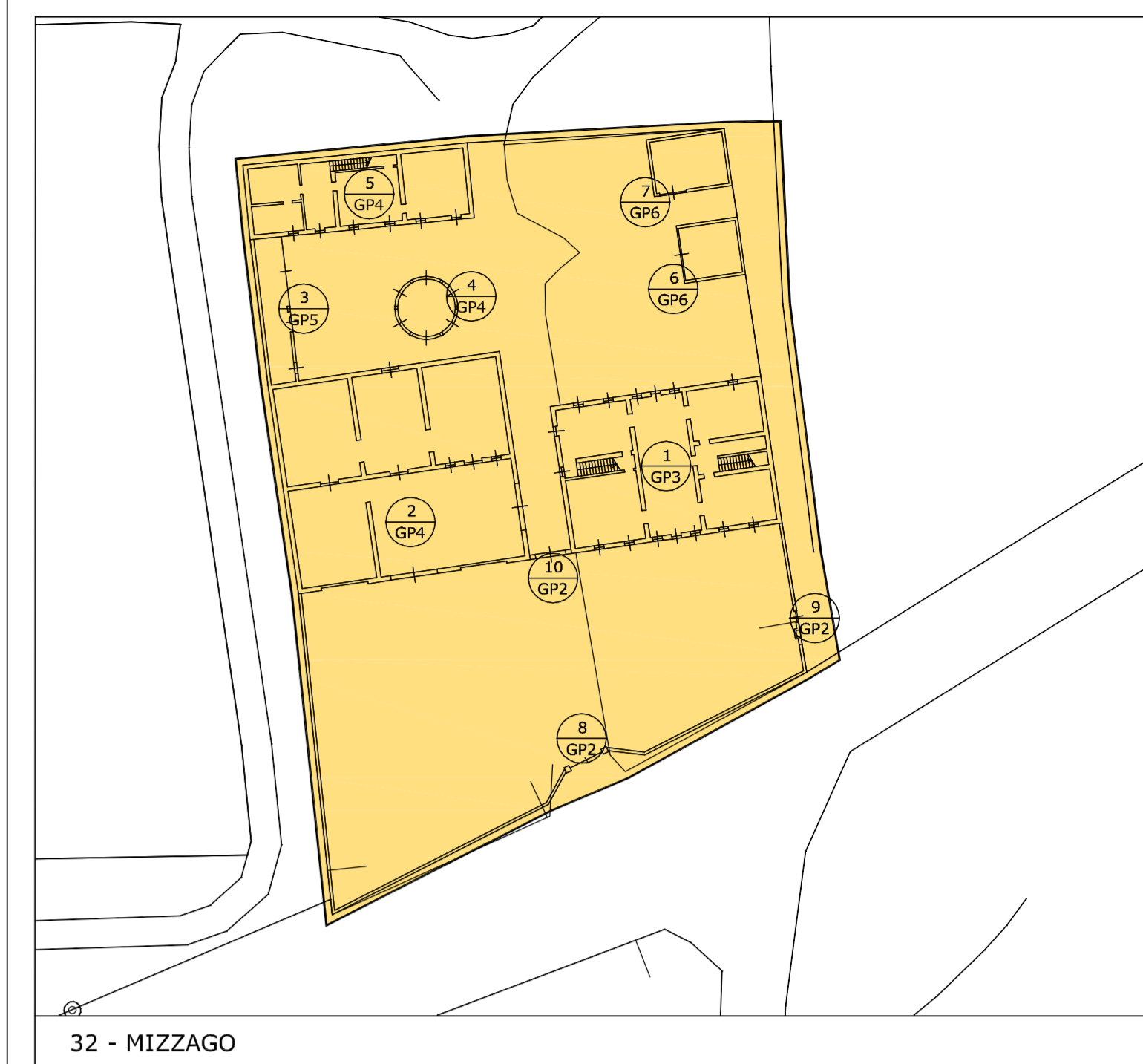
26 - SANT'ANTONIO



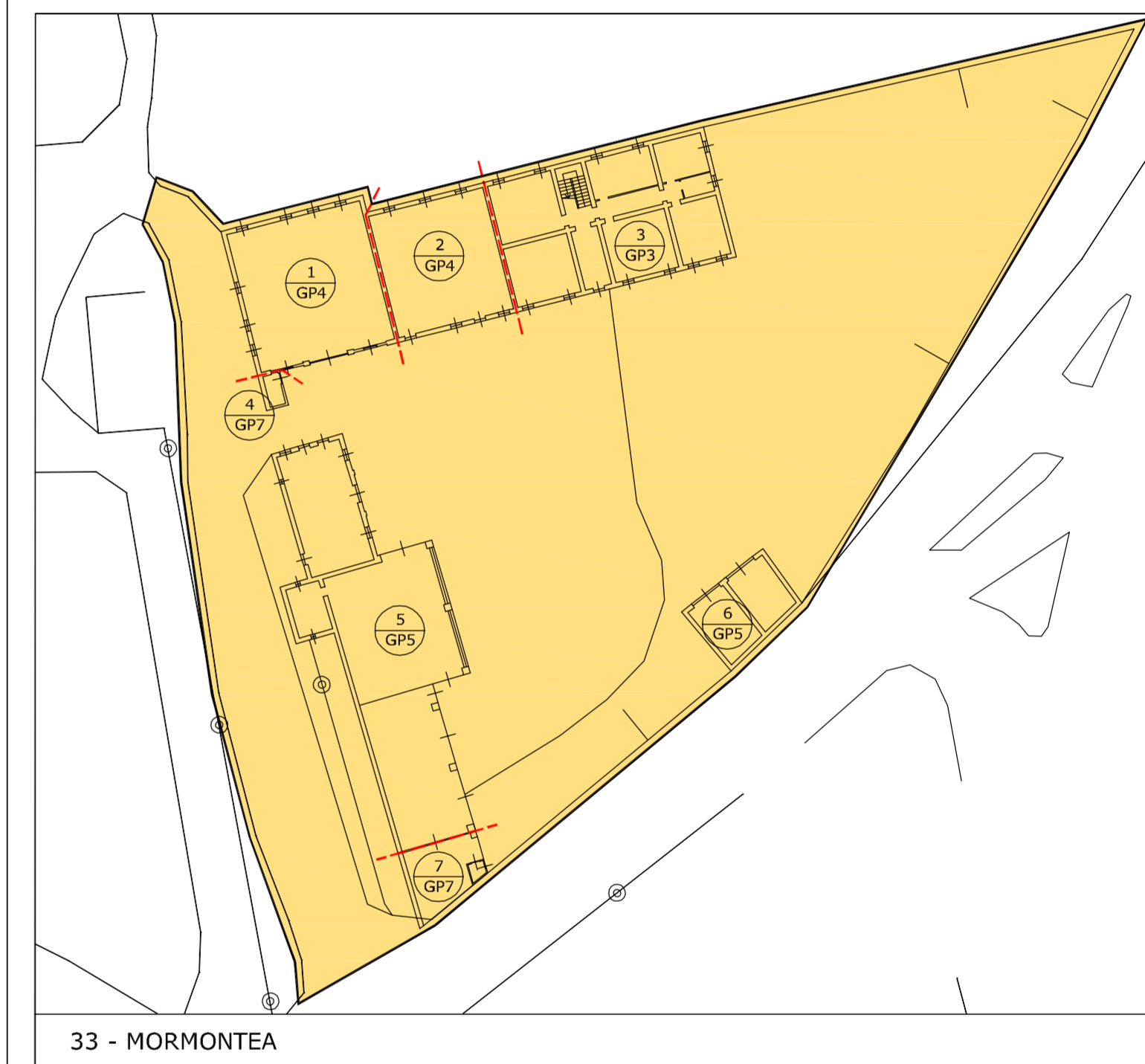
29 - CALLE



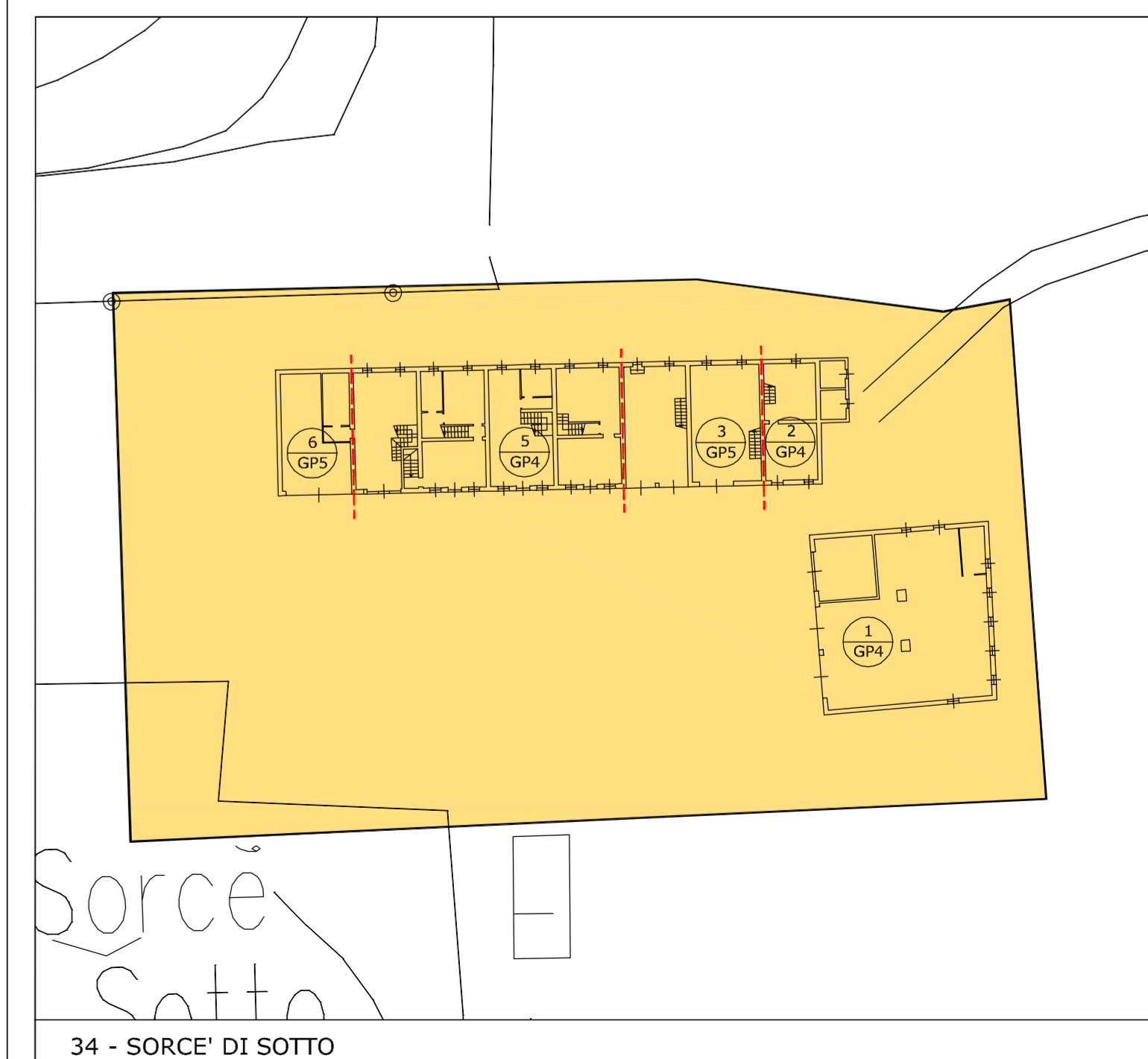
30 - SANTA GIUSTINA



32 - MIZZAGO



33 - MORMONTEA



34 - SORCE' DI SOTTO